

# 2024 | ANNUAL REPORT



**Promoting avalanche safety throughout North Idaho and Western Montana since 2011.**



**IPAC**

Idaho Panhandle  
Avalanche Center



Friends of  
**IPAC**



# MISSION



**IPAC**

Idaho Panhandle  
Avalanche Center

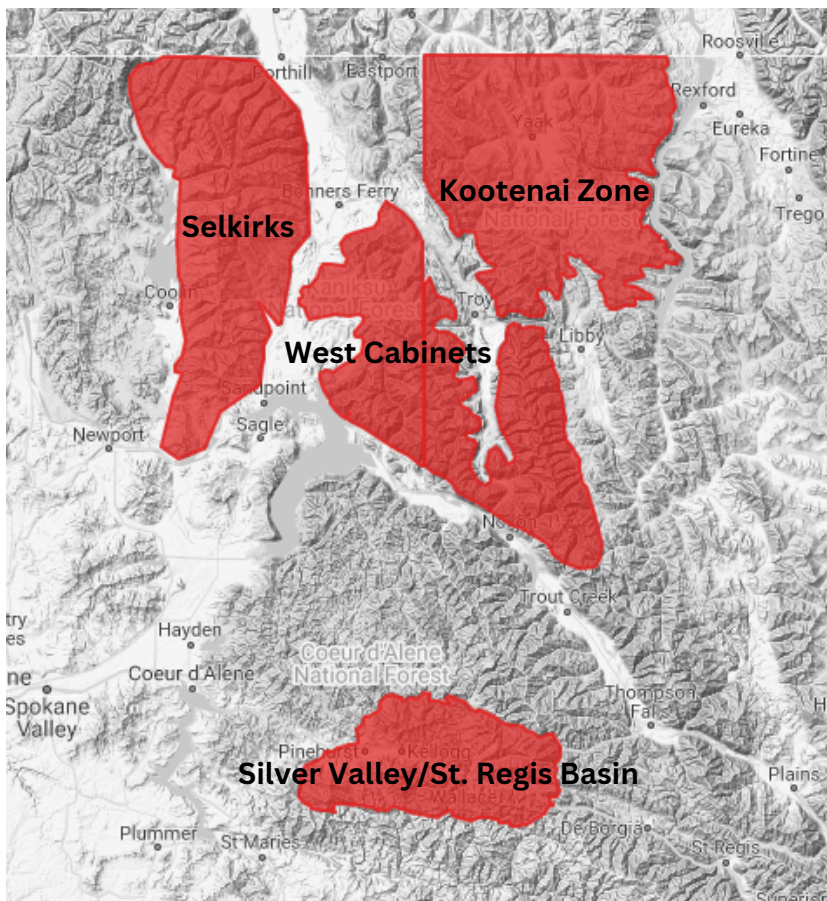
The mission of the IPAC is to provide avalanche information, education, and promote research for the protection of life, property, and enhancement of the state's economy.



Friends of  
**IPAC**

The mission of the Friends of IPAC is to support avalanche forecasting and education throughout the Panhandle.

# FORECASTS & OVERVIEW



IPAC issued regular avalanche forecasts every **Tuesday and Friday** through the forecast season with general avalanche information statements issued in between forecasts.

Over the course of **20 weeks** a total of **40 forecast cycles** across **three forecast zones** resulted in **112 total avalanche forecasts** and **90 total general avalanche information statements**.

We issued a combined total of **26 high avalanche watches, warnings, and special avalanche bulletins**.

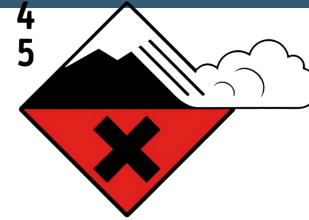
112  
# Forecasts

40  
Forecast Cycles

16  
Notices

3  
Forecast Zones

# ACCIDENTS 2023-2024 SEASON



15  
US Fatalities

11  
Skier/Snowboarder

3  
Snowmobiler

1  
Inbounds skier/boarder

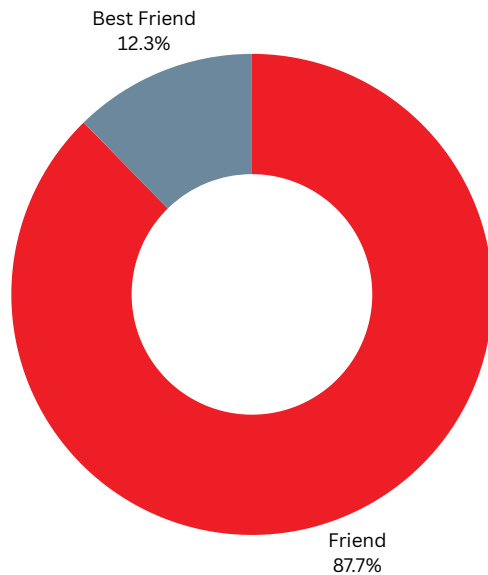
- 05/09 UT LONE PEAK, UTAH  
3 BACKCOUNTRY SKIERS CAUGHT, 2 KILLED 2
- 03/29 WA MOUNT ST HELENS  
1 BACKCOUNTRY SNOWBOARDER CAUGHT AND KILLED 1
- 03/12 MT WEST FORK CAMP CREEK NEAR LOST TRAIL PASS, BITTERROOT MOUNTAINS  
1 BACKCOUNTRY SKIER CAUGHT, BURIED, AND KILLED 1
- 03/06 OR GUNSIGHT MOUNTAIN, ELKHORN MOUNTAINS  
1 BACKCOUNTRY SKIER CAUGHT, NOT BURIED, AND KILLED 1
- 03/01 WA DARLAND MOUNTAIN, AHTANUM MEADOWS  
1 SNOWMOBILER CAUGHT, BURIED, AND KILLED 1
- 03/01 ID GUNSIGHT PEAK, MCCORMICK CREEK, SELKIRK MOUNTAINS  
1 SNOWMOBILERS CAUGHT, BURIED, AND KILLED 1**
- 02/13 AK JOHN MOUNTAIN, KENAI MOUNTAINS  
3 BACKCOUNTRY SKIERS CAUGHT, 2 INJURED, 1 KILLED 1
- 02/11 CO ANTHRACITE RANGE, EAST OF OHIO PEAK  
1 BACKCOUNTRY SKIER CAUGHT, BURIED, AND KILLED 1
- 02/09 WY WEST FORK OF HASKINS CREEK, WEST OF BATTLE PASS  
2 SNOWMOBILERS CAUGHT, 1 PARTIALLY BURIED-CRITICAL AND KILLED 1
- 02/02 AK LAKE GEORGE, CHUGACH MOUNTAINS  
1 HELISKIER CAUGHT AND KILLED 1
- 01/22 CO WATERFALL CANYON, SOUTH OF OPHIR  
1 BACKCOUNTRY SNOWBOARDER CAUGHT, PARTIALLY BURIED, AND KILLED 1
- 01/14 WY LITTLE POUUDRE MOUNTAIN, PRATER CANYON  
1 BACKCOUNTRY SKIER CAUGHT, BURIED AND KILLED 1
- 01/11 ID STEVENS PEAK, LONE LAKE DRAINAGE, BITTERROOT MOUNTAINS  
2 BACKCOUNTRY SKIERS CAUGHT, 1 INJURED, 1 PARTIALLY BURIED-CRITICAL AND KILLED 1**
- 01/10 CA KT-22, SIERRA NEVADA  
1 RIDER INJURED, 1 KILLED 1

2  
Local Fatalities

**\*Accidents in bold were within the Idaho Panhandle Avalanche Center forecast zones.  
For more information and local accident reports visit [www.idahopanhandleavalanche.org/local-accident-reports](http://www.idahopanhandleavalanche.org/local-accident-reports)**

# GETTING THE MESSAGE OUT

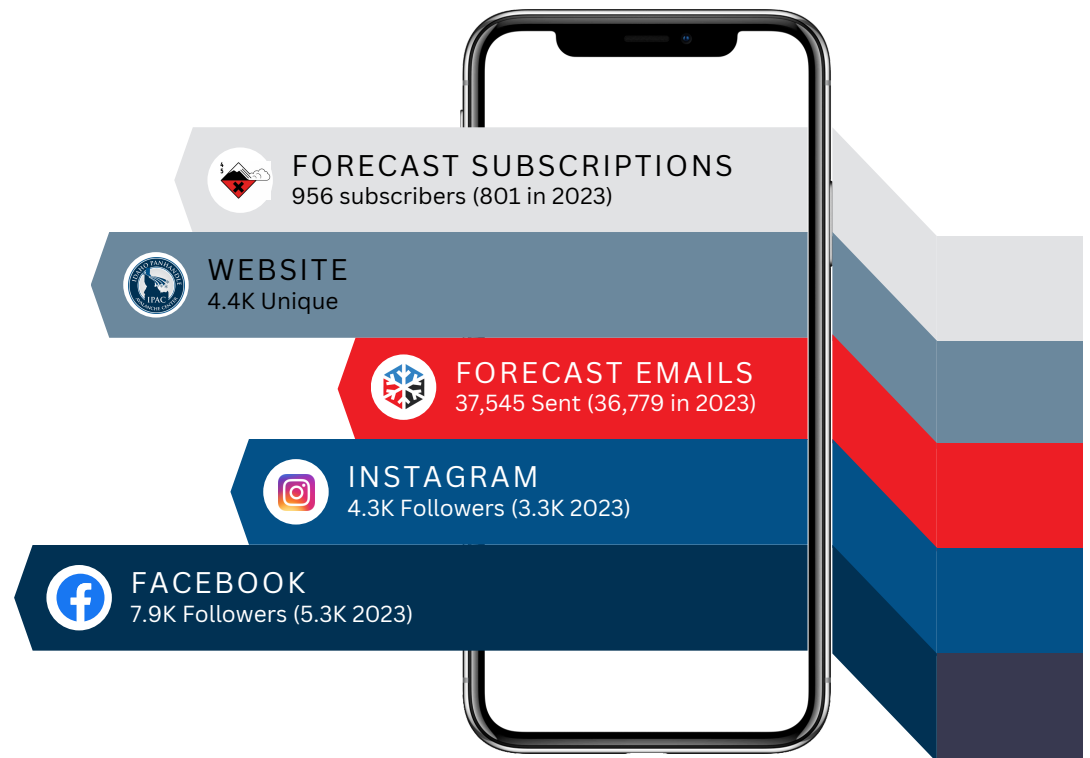
146 Active Members



**PUBLIC OBSERVATIONS**  
85 Submitted



**TOP PAGES:**  
Forecasts, Observations, Local Accident Reports, Station map/weather



## Website & Social Media

ANALYTICS (OCT-APRIL)

# EDUCATION & OUTREACH AWARENESS TOUR

Education program coordinator Jon Totten ran **28 courses** and **12 community awareness nights** across the Panhandle this season.



FIPAC saw record numbers of participants in its avalanche education program this season with **389 students** participating in **28 courses** led by **16 instructors** and **10 volunteers**.

2023 - 23 courses, 373 students  
2022 - 16 courses, 313 students



Mother nature certainly kept us on our toes this season, but i'm proud to say that we persevered and remained committed to providing quality and accessible avalanche education in the Idaho Panhandle.

A highlight this season was the **addition of a Junior Avalanche Awareness program**. We had **15 students, ages 13-17**, participate in two classroom sessions followed by a full day in the backcountry. The feedback from the students and parents affirmed our effort to engage the youth in our area in avalanche education beyond the classroom. - Jon Totten

# SPONSOR HIGHLIGHT



We are incredibly thankful for our supporting businesses that contributed this season.



# 2023-2024 STAFF & BOARD

## FRIENDS OF IPAC STAFF

**Jon Totten**  
Education Director

**Danica Gilbert**  
Development

**Brendan Bonner**  
Sponsorship Coordinator

**Brett Vangen-Weeks**  
Instructor

**Cortland Nutt**  
Instructor

**Dash Kamp**  
Instructor

**Scott Rulander**  
Instructor

**Sarah Klintworth**  
Instructor

**Katie Heil**  
Instructor

**Ian St. John**  
Instructor

**Mark Terry**  
Instructor

**Terry Brinton**  
Instructor

**Melissa Hendrickson**  
Instructor

## IPAC STAFF

**Ben Bernall**  
Avalanche Forecaster

**Jeff Thompson**  
Avalanche Forecaster

**Mikey Church**  
Avalanche Forecaster

**Brian Hilland**  
Field Assistant

**Issy Davis**  
Field Assistant

**Micah Kromptich**  
Field Assistant

**Kyla Berendzen**  
Field Assistant

**Nate Stephens**  
Field Assistant

**Liz Figgins**  
Field Assistant

**George LarGesse**  
Field Assistant

## FRIENDS OF IPAC BOARD OF DIRECTORS

**Gabe White**  
President

**Tom Eddy**  
Vice President

**Gary Quinn**  
Director

**Sean Mirus**  
Director

**Larry Banks**  
Director

**Mike Brede**  
Secretary

**Miles Rinne**  
Treasurer

## VOLUNTEERS

**Paul Ainsworth**

**Shaun Danielson**

**Taite Petersen**

**Janae Klimczak**

**Sean Murphy**

**Devin Kohles**

**Devon Lapraith**

**Olivia Clausen**

## Pups of the Avalanche Center

**Annie**

**Abby**

**Murphy**

**Maisie**

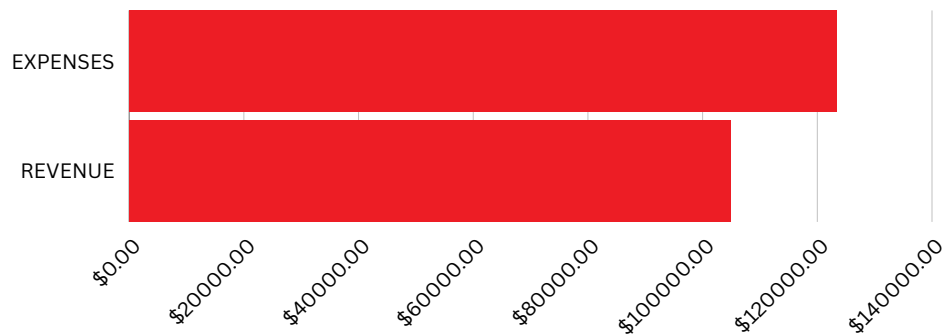
**Reba**

**Cedar**

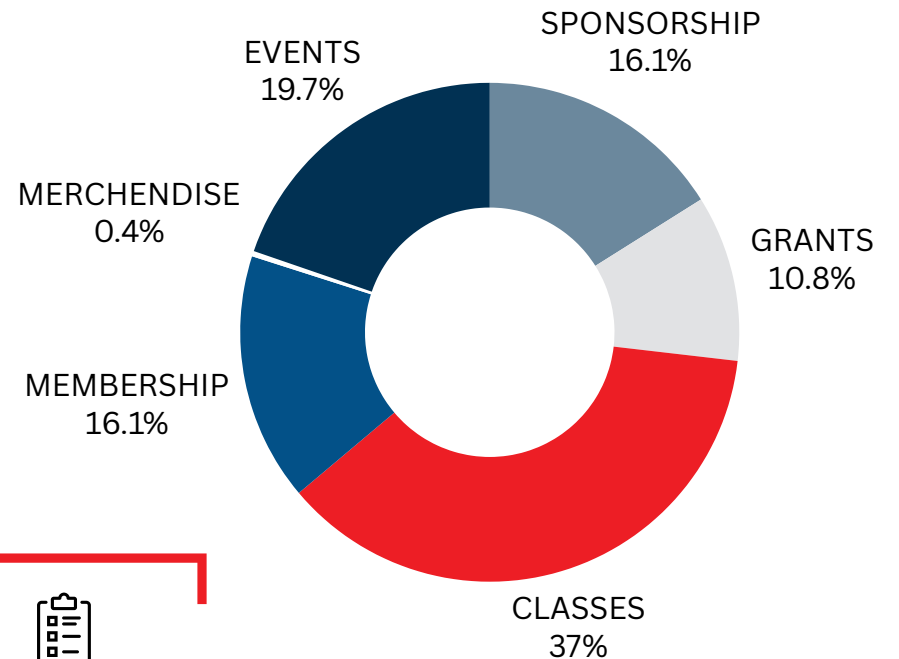


# FINANCIAL BREAKDOWN FRIENDS of IPAC

## REVENUE & EXPENSES

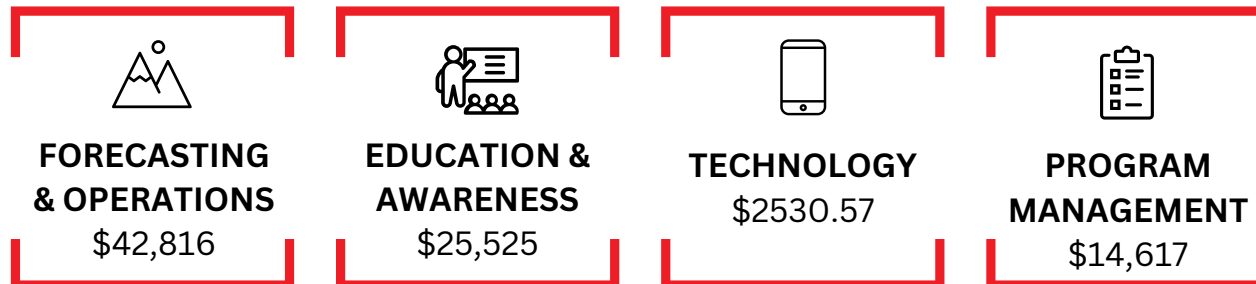


## REVENUE BREAKDOWN BY CLASS



## COST BREAKDOWN

The Friends of IPAC invested \$123,330 into avalanche forecasting and education during the 2023/2024 Season.





**Friends of IPAC**  
**PO Box 405**  
**Ponderay, ID 83852**



**IPAC**  
Idaho Panhandle  
Avalanche Center



Friends of  
**IPAC**

[idahopanhandleavalanche.org](http://idahopanhandleavalanche.org)